



MAJOR SEALED BID SALE

BOONE COUNTY & DALLAS COUNTY, IOWA

755.89 SURVEYED ACRES M/L OFFERED IN FIVE TRACTS
SEALED BIDS DUE NO LATER THAN MAY 15, 2024 AT 5:00 PM (CST)

Peoples Company is pleased to represent the State of Iowa in the sale of 755.89 surveyed acres of Boone County and Dallas County, Iowa high-quality farmland. Located within a short drive of the Des Moines Metro Area these highly tillable, contiguous tracts of farmland have been proudly owned for many decades with a long-term tenant that has taken excellent care of each tract.

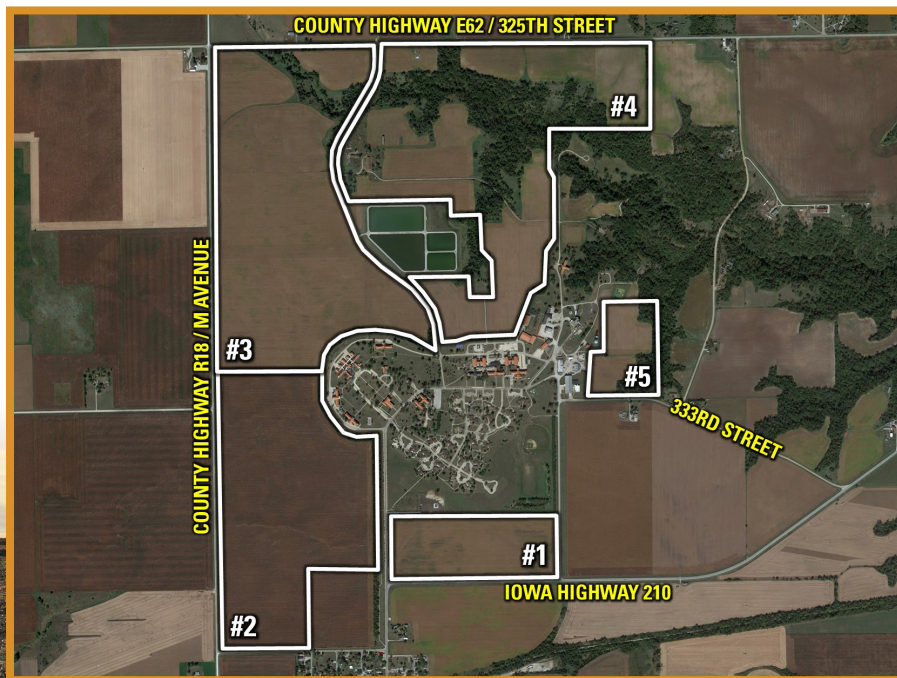
Tract 1: 55.78 Surveyed Acres M/L, 51.54 FSA cropland acres, CSR2 of 87.1.

Tract 2: 176.06 Surveyed Acres M/L, est. 172.34 FSA cropland acres, CSR2 of 87.5.

Tract 3: 245.92 Surveyed Acres M/L, est. 218.64 FSA cropland acres, CSR2 of 85.0.

Tract 4: 248.19 Surveyed Acres M/L, est. 145.81 FSA cropland acres, CSR2 of 83.8.

Tract 5: 29.94 Surveyed Acres M/L, est. 22.18 FSA cropland acres, CSR of 83.7.



SCAN TO
LEARN MORE