

DALLAS WHEATLEY ESTATE AUCTION

Thursday, March 21st - 10:30 a.m.

No Reserve
LIVE AUCTION
Online Bidding

Address: 625 New York Ave, Creston, IA
Directions: On Highway 34 heading west out of Creston.

Full Listing Online at: www.RiceAuctionCompany.com



TRACTORS & ATTACHMENTS

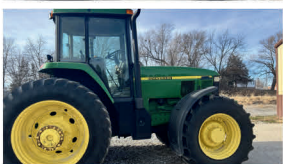
2017 9520X TR, 2292 hours. PST 18 power shift, 10in color touch display, 4600 processor, auto steer, 59 gpm hyd pump, five remote cylinders CRL Lo flow, 1000 PTO, premium lighting, track 36in dura-drive 3500, track spacing 87.32 fixed, premium cab CV III w/ suspension, JDLINK con upgrade. Always stored inside.



2013 John Deere 6150R MFWD, 2,254 hours. ITV 40K, premium cab, 3 remote cylinders, 540/1000 PTO, RS w/ CAT 3 hitch, 420/70R30 fronts, 620/70R42 rear tires, Greenstar Auto Trac, cold weather package II, premium light package, 300 AMP alternator, Always stored inside.



2012 John Deere 9560, 2,429 hours, TR IT 4 18/6 Powershift transmission, 2630 touch display, Auto steer, Cab premium, hi-flow hydraulic system, no PTO, drawbar CAT5 HD SPT 2P5N, Dual Michelin 800/70R38, premium HID light package, wide rear fenders, front and rear wheel weights, Always stored inside.



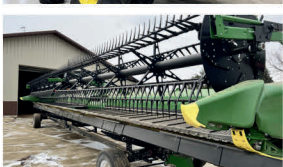
2003 John Deere 7810 MFWD, 16,000 plus hours. 3 rear remotes. 540/1000 PTO. 19 speed powershift transmission. 3 point. Tractor starts and runs. Transmission has issues under load. YOU ARE BUYING IT 100% AS IS!!!



1990 John Deere 4455 MFWD, 10,XXX hours, John Deere 740 loader, 7ft bucket. New cab kit, seat, stereo and overhead console; new fuel tank and all AC components 2 years ago, new injection pump less than 500 hours, new hi torque starter, new alternator, new battery cables.



John Deere Precision Extended Monitor Starfire 6000



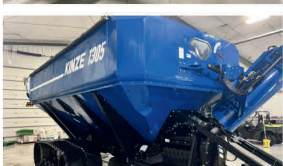
MDS 2-pront Bale Stabber, JD 600/700 mounts.

TRUCKS/TRAILERS

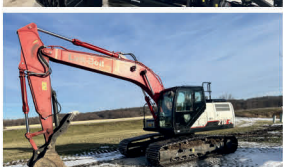
2023 Wilson hopper, 41ft long, 66inch sides, and 96 inch wide. Ag hoppers. Electric tarp in excellent shape. All aluminum wheels. Air-ride. Tires(11R24.5) pulled less than 10,000 miles.



2005 Kenworth T600, 813,648 miles, C13 CAT @ 435 HP, recent in-frame overhaul with less than 250 miles since completed. New head and injectors. New AC compressor. New pre-cooler. High torque starter and batteries less than 3 months old. Have all receipts for the work. Truck has new transmission and clutch less than 30,000 miles ago. Upgraded to 13 speed. 3:55 gear ratio. New steer brakes. 236 inch wheelbase. 72 inch mid-roof sleeper. 285/75R24.5 tires, rears like new, fronts very good.



2020 H&S Aluminum Utility Trailer, 12ft long by 82 inches wide. 4 1/2 ft folding ramp.



2013 Parker 7x14 gooseneck dump trailer. Electric over hydraulic. Stowaway ramps. Swinging rear doors. 8 bolt wheels. 14,000 GVWR. Bent axles.



2006 Wilson Ranch Hand aluminum livestock trailer. 20ft long by 7ft wide. One cut gate. Roadside escape door. Rear swing with slider. Aluminum floor. Torsion axles.

HAY/LIVESTOCK

John Deere 568 baler. Mega wide plus. New belts. 13,391 bales. Surface wrap and twine. Cover edge. Pickup has hydraulic lift. Monitor. Good solid baler with many recent repairs.



2005 John Deere 946 MOCO. 2 point hitch with hydraulic swing. Impeller. Small 1000 PTO. Mechanical cutter bar tilt adjust. 12ft 6inch cut.

2021 H&S 14 Wheel Rake, bi-fold, hi capacity, manual windrow width adjust, good condition.

2021 Schaefer 8 Bale Trailer, good tires, like new.

Schuler HF255 self contained with gas engine powered feed wagon, Honda 690 engine. Electric start, working scales, cordless remote, very good condition.

Sioux Steel Chute/Alley/Tub combo portable, 8 ft corner less tub with catwalk, 16 ft total tub length, squeeze chute, manual headgate, drop down feet and ribcage doors, palpation cage, rollup rear gate, electric and manual jacks, 8 1/2 ft long alley, full catwalk.

Titan West O.K. Corral 'Original'. 4 - 24 ft, 4 - 23 ft and 4 - 18 ft panels all 69 inch tall with compartment behind the hitch, 8-bolt wheels and 16 in tires. Good condition.

Industrias America Silage/Hay Feeder, 80 in wide, 24 ft long.

King Ag Feed King 125 bushel Creep Feeder, with creep cage, good condition.

10 - 24' free standing panels, 58 in tall

PLANTING/SPRAYING/HARVEST

2023 DB60 36R20 Planter, 36 row, 20in rows. 2,698 acres. Exactemerge package, three section frame, connect mobile ready, JDLINK hardware only, central commodity system, CAT 4 Drawbar hitch, electric drive exact emerge, heavy duty wing wheels, truvee openers single walk spoke, steel scrapers, mini seed hop/high per meter, individual row hyd down force, cast iron closing wheel, seedstar 4HP mon sys mobile, brush belt delivery sys high, pneu unit mtd row/crn narrow, markers 16in notched disk, frame weight distribution, 4W solid rockshaft lift sys, less tank and mounting brackets, premium lighting, exact emerge corn and soybean bowl, starfire ready, less granular chemical, less fertilizer. Shut-offs every 2 rows. Always stored inside

2020 John Deere R4038 Self-propelled sprayer. 405 hours. Green Star Display, Starfire 6000 Receiver, Premium commandview III cab, premium radio, Engine 9.0L Tier 4 Stage V, hi flo pump w/ dual flowmeter, SS Eductor and automatic solution control, front fill, 120 ft steel booms, JD exactapply nozzle control, 15" on-center nozzle spacing, 120 ft auto boom leveling system, wheel slip control, boom air purge, LED field lighting package, fence row nozzle RH/LH, at vision.rowsense base, autotrac vision/rowsense. Always stored inside.

650/65R38 floatation tires. Fits JD R4038 sprayer and other models.

2015 Talbert triple axle trailer. Set up as sprayer tender trailer. Ride-well air ride suspension. 2 poly band tanks with 7150 gallon capacity. Handler III eductor mixing system with electric wind super reel. 3inch plumbing. Honda gas GX 390 transfer pump. Storage cage. Trailer has electric over hydraulic self contained hydraulic system, 4 point hydraulic leveling. Hydraulic jacks.

2022 S780 STS. 402 ENGINE, 263 SEP HOURS. PD HRVSMRT FRC FT4, premium cab, ATC YLD+ moisture/yield sensor, L premium LED & EXT Light, premium radio, premium plus 4g MTG, no receiver, Gen 4 4600 Command Center, Pro Drive Trans w/ harvest smart, 4WD, tristream rotor xtd wear, power folding covers, 26ft unloading auger, powercast powered tailbar, Michelin Performance 650/85R38, air compressor, extended wear round bar concave. Always stored inside.

2023 John Deere C18R Corn Head. 117.5 one owner hours. 18-row rigid head 20" row spacings, row sense, rowmax chopping stalk roller. Always stored inside.

2022 John Deere HD45F Hinged Draper. 198 one owner hours. 45ft wide, flip over reel, coarse tooth, s- series, grain saver side belts, center crop flow divider, wing leveling, belt protection system. Always stored inside

2021 Kinze 1305 grain cart. 36inch wide Camso tracks. Big 1000 PTO. Electric tarp with remote control. 24" vertical and 22" horizontal augers. 35-degree adjustable spout. Hydraulically adjustable flow gate. Joystick control. Pivoting external corner auger.scale. Back up camera.

Industrias America 835 head trailer, 35 ft long, good tires, adjustable saddles.

2023 HULL MFG 47 FT head trailer. Like new condition. Front dolly. Rear spread with torsion axles. LED lighting. Electric brakes. Fully adjustable saddles.

2022 BATCO 1539 conveyor. 15inch belt, 39ft long. Single phase electric motor. Drop down low pro hopper.

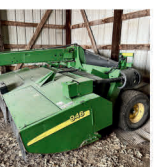
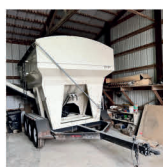
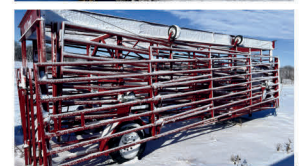
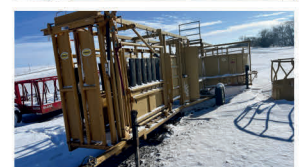
Westfield W80-61 conventional auger. 8inch by 6ft. 10 HP single phase electric motor.

CONSTRUCTION EQUIPMENT

2021 LINK-BELT 210 X4. 542 HOURS, 46 in wide bucket, good teeth, auxiliary hydraulics with hydraulic thumb, 32 in wide tracks, 160 hp, Isuzu engine, cab heat and air.

2016 Ashland 175XL2 pull type hydraulic scraper. LIKE NEW CONDITION, VERY MINIMAL USE. 17.5yd heaped capacity. Like new tires. Hydraulic ejection. STORED INSIDE. EXTREMELY CLEAN.

Hot Springs Spas Hot Tub



www.RiceAuctionCompany.com



Jake Rice - Auctioneer
641-202-3315

Lunch stand & restrooms on-site.

Disclaimer: This will be a LIVE auction with ONLINE bidding. NO onsite buyer's premium, 5% buyer's premium to winning online bidders capped at \$2,500 per item. Loader and operator will be available sale day or by appointment. Payments accepted are cash and check. NOT RESPONSIBLE FOR ACCIDENTS, ERRORS OR OMISSIONS. ANNOUNCEMENTS MADE ON SALE DAY TAKE PRECEDENCE OVER ANY PREVIOUS WRITTEN OR VERBAL STATEMENTS. All items are sold as-is, where is with no guarantees or warranties.