

to be sold at:

PUBLIC AUCTION

Saturday, August 27th, 2022 @ 10:00 AM!

AUCTION LOCATION: 2056 300th Street, Odebolt, Iowa

From Hwy #471 & # 175 (Spring Lake Country Club), 3 miles North on #471 (Karr Ave.), 1 1/2 miles west on 300th Street OR From Early, IA., 7 miles South on #471 (Karr Ave.), 1 1/2 miles west on 300th Street.

TRACTORS



1956 John Deere 420-W, gas, wide front, restored, like new 13.6-28 rear rubber, good front rubber, clam shell fenders, 3 point, 540 PTO, runs, serial #82085



1949 John Deere MT, nf, gas, square seat, like new 11.2/10-34 rear rubber, 2pt, No PTO, Runs, Serial #11094



Ford 5000, wide front, 3 rear wheel weights, 3 point, 540 PTO, 2 remotes, canopy, 15.5-38 rear rubber, runs, good overall condition



1949 John Deere Model D, will run, Serial # 183792, 18.4-30 rear rubber, drawbar



1929 John Deere Model D, on steel wheels, will run, drawbar, overall good paint and straight tinwork



Farmall Cub, wide front, new 9.5-24 rear rubber, 540 PTO, drawbar, will run, Serial #97468



Ford 950/960, wide front, gas, not running but Sellers did not try to get running, straight tin work, 540 PTO, 3 point



1959 John Deere 630, gas, power steering, roll o matic narrow front, straight tin work, Goodyear 13.6-38 rear rubber, drawbar, 1 remote, 540 PTO, not running



Fordson Major Diesel, wide front, good paint, straight tinwork, good rubber all the way around, 16.9-30 rear rubber, 3 point, 540 PTO, not running

1939 John Deere Model B, nf, new front tires, good tinwork, 540 PTO, drawbar, not running

1954 John Deere Model 50, nf, gas, 12.4-38 rear rubber, 540 PTO, square seat, drawbar, straight tinwork, not running, Serial #5018423

1947 John Deere Model A, gas, nf, not running, 540 PTO, 1 remote, drawbar, straight tinwork

1939 John Deere Model B, not running, wide front, spoked front & rear wheels, good tinwork, Serial # 74588, 540 PTO,

drawbar, one rear rim will need replaced, as-is

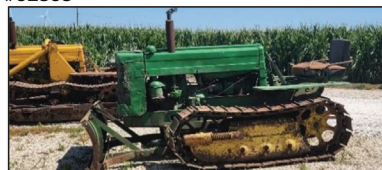
John Deere Model 60, nf, gas, not running, good tinwork, 540 PTO, 2 rear remotes, drawbar, 13.6-38 rear rubber, good restoration project, Serial #6011753

Oliver 70 parts tractor
Parts tractor, steel wheels F20

CRAWLERS



1956 John Deere 420C crawler with bucket, drawbar. Not running, Serial #92365



1953 John Deere 40C crawler with blade, non running, drawbar, 540 PTO, Serial #61219

IMPLEMENTS & ANTIQUES

John Deere 3 bottom plow, pull type, spoked wheels, good paint,

John Deere 2 bottom plow, pull type, on rubber, spoked rims

2 bottom plow, pull type, on rubber, spoked wheels, good paint, nice overall condition

John Deere 494A 4R planter, good paint, **Oliver Corn Master Picker**, pull type, 2 row, serial #11664

John Deere corn sheller, metal, good overall condition

John Deere corn sheller, wood, good overall condition

Arps rear 3 pt blade

2 Row planter, more info coming soon

Potato planter; Potato Plow

Antique 2 row planter on steel

John Deere 3 bottom plow, 3pt

TRAILERS

Shop made tilt bed trailer, good wood floor, no title or registration

Small homemade trailer, 4'x7' +/-

Online bidding provided by:

David Bettin Estate, Owner

Sale Arranged & Conducted By:

Green Real Estate & Auction Co.

Mike Green & Jim Green, Auctioneers

Sac City, IA., ph. 712-662-4442

www.greenrealestate-auction.com

DOWNLOAD OUR APP

GET IT ON

