

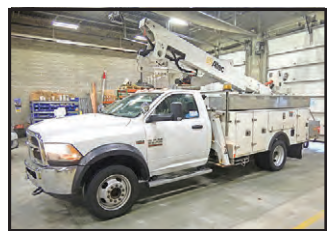
VEHICLES & EQUIPMENT AUCTION

500+ ITEMS SELL
NO RESERVE!
Straight. Simple. Sold.
866.608.9283

purple wave
AUCTION

WEDNESDAY, APRIL 21

Bidding starts to close at 10 a.m. CDT



DF6763 '15 Dodge Ram 5500 bucket truck



DM2864 '07 Int'l 4300 utility/service truck

HF9831 '10 Chevy Camaro SS



BID NOW!



DJ0217 '12 GMC Yukon Denali SUV



HG9677 '13 Chevy Tahoe SUV



HV9711 '16 Chevy Silverado 1500 LT Crew Cab pickup truck



HG9676 '15 Chevy Silverado 2500HD Crew Cab pickup truck



HO9331 '05 Infinity power parachute



DJ0194 '59 Ford Thunderbird convertible



DJ0196 '61 Ford F100 pickup truck



GQ9965 Remote Mowers TRX-48-PRO ZTR slope mower

INVENTORY INCLUDES: pickup trucks, SUVs, passenger and classic vehicles, dump trucks, utility vehicles, trolley, tractors, wood chipper, shuttle buses, equipment trailers, flatbed trucks and more. *All items are sold "AS IS." 10% buyers premium applies.*

purplewave.com

APRIL 14, 2021

ADVERTISING THAT GETS RESULTS!

PAGE 16 B

Gather Up Bargains! THE EXCHANGE GETS RESULTS!

ESTATE AUCTION OF FARM EQUIPMENT - SALVAGE - TOOLS TRAILER HOME - COLLECTABLES

FRIDAY, APRIL 23RD, 2021, 10:00 A.M.

Sale Location

One mile South of Shambaugh, Iowa, on US Highway 71, then 3/4 mile West on J-52 (280th Street)

AUCTIONEERS NOTE: LARGE AUCTION, LOTS OF AS IS ITEMS, LOADER TRACTOR AVAILABLE SALE DAY

TRACTORS: Case 1070 Diesel, triple hydraulics, open station, unknown condition, sold 'as is'; Case 1070 with cab for salvage; Farmall Super C, narrow front, 'as is'; Farmall 140, wide front, state tractor, cute, 'as is'; Farmall 230, 'as is'; Massey Harris 444 wide front; fenders 3pt, 'as is'; Massey Harris 444 for salvage; IH Tractor with scoop, for salvage; **TRAILER HOME:** 14' X 60' Trailer home, 2 bedroom, 1 bath, sold to be moved, has wheels under. Vaulted ceiling, aluminum skin, make a great hunting cabin or project; **VEHICLES:** 1985 Nissan king cab pickup, 4x4, 5 speed, 'as is'; Nissan Night Flight pickup, 'as is'; 1972 Custom 10 Chevy pickup with extra bed, 'as is'; NH 256 rake with front dolly wheels; 400 bu grain cart; (2) JD #5 bar mowers; JD bar mower converted to 3pt; Oliver 565 semi mounted plow; 4 bottom semi mounted plow; 16' stalk shredder; 2 row corn chopper, parts; Case 230 square baler; 2 wheel 5'x10' trailer; 4 section Harrow w/cart; 3 pt 250 spreader, A-1; (2) 100 cart sprayers; Kewanee 1010 wheel disc, hydifold, dual trucks, 18'; Shore Lander boat trailer; Vermeer big baler for parts; (2) Grain-O-Vator style wagons; Frame for JD 7000 planter; New Idea 2 row pull type picker, looks complete; JD 510 big baler, no belts; Old 6' stalk shredder; IH 2 bottom trip plow; Hesston bale fork; JD pull type disc, parts; 1500 gal poly tank; Meyer 8' pickup snow plow; Ford ditch trencher, RM; Rail Road Electric service cart; 2 wheel loading chute; 1 yard 3 pt dirt scraper; **PARTS AND MISC.:** Large amount of salvage iron; Implants tires; IH tractor parts; Lots of HD cylinders; 18" road tubes and culvert flares; 1000 gal. LP tank. LP tank 70% full; 500 gal. LP tank; (2) 250 gal. LP tanks; Several smaller LP tanks; Perkins Diesel Engine; 2 iron stationary engine flywheels; Chase 14' grain box; Truck flat bed; electric motors; electric 2x60 amp entrance; (9) New 5 gal pails transmission and hydraulic oil; Truck van box 16' w/Tommy lift; Transit stand and pole; Pacific Hydro Star 145 g.p.m. clear water pump, new; 1 HP shallow well pump, new; Pump and pressure tank; (22) 2'x3'x2" concrete slabs; 20 ton hydraulic jack; Welding flats and 1+ 2" rectangular tubing; (8) 100# IH front weights; Electric air compressor run by 20 hp 3 phase motor, 'as is'; 1000 ft heavy duty underground electric cable, aluminum core, in 2 rolls; PTO Generator, 'as is'; (4) 14:00x20 Michelin heavy duty tires; (2) 1000 bu grain bins to be moved; 20 plus sheets of new steel siding; (2) small grain bins to be assembled; Misc boxed household items, tools.

All announcements made sale day take precedence over printed material.

GlobalAuctionGuide.com or AuctionBill.com for Pictures & More Information

Keith Zessin Estate

ANTIQUE JOHN'S CLERK
JOHN WILLIAMS 712-542-0710
GEORGE CRAWFORD AUCTIONEERS
(712) 303-0704 • (712) 542-3335

LUNCH BY
J&M CATERING

Crawford & Co
REAL ESTATE & AUCTION
www.crawfordrealestate.net
Join Us on Facebook!
www.facebook.com/CrawfordCoRealEstate

Clip & Save

ANNUAL SPRING MACHINERY/ FARM EQUIPMENT AUCTION Saturday, April 17, 2021 • 9 AM

Auction Bldg, 1916 S 18th St (Hwy 5 South) Centerville, IA

2 ACWD Tractors; Farmall 560 Tractor; Horse Drawn Wedding Bridal Carriage; JD 9400 Combine, 4600 hrs (dish on hopper is not included), 920 Grain head w/ cart, 643 corn head, In very good condition; JD Utility Tractor (2 wd, 72" mid mt mower, fiberglass canopy, 28hp, radio, 1600 hrs, one owner); 4 R. 38" JD 444 Corn Hd; 6 Rolls Poly Twine; MF 230 Gas Tractor, wf, w/ loader, low hrs, RUNS; Case 1070 Tractor, wf, good tires; B Farmall parts Tractor; Small Ac Tractor; Kawasaki Mule 3010 4wd locking differential, low hrs, one owner; 02 Polaris Ranger 6x6, 6 new tires, 850 hrs; Terrapro 4x4 w/ FM-48 Brush Cutter; 1963 Jeep Gladiator J-300, Rare, has Willys Badge, original miles 34,277; 1968 CJ5 Jeep, Yellow, all original, less than 100 miles on newly complete rebuilt 4 cyl engine; 1973 CJ-5 Green Jeep, V8, 3 speed; Another Jeep Body Selling; Snow Plow (will fit the Jeeps); Jeep Parts; 1990 18' All Steel Flatbed Gooseneck Trailer w/ Ramps; 06 Ford Super Duty 4x4 Pick Up 6.0,D; 83 Gooseneck Livestock Trailer; Farm Trailers; JD 566 Net Wrap Baler; IH Case Baler; Hesston 560 Big Round Baler; JD 567 Big Round Baler; JD 7000 4 R Planter/Bean Plates; IH 475 Hyd Fold 16' Disc; NH 258 Rake; JD 1518 Batwing Mower; Tonntt 8 Wheel Rake/Kicker Wheel; Kuhn Disc Mower; AS IS Fiat -Agri Skid Loader; JD Grain Drill; Bale Buggy on Wheels; JD Grain Drill w/ Grass Seed Boxes; Sunflower Chisel Plow; JD 110 Disc; 10' Pull Brillion Seeder, non hyd; 10' Vibra Shank Cultivator, hyd lift on wheels; 7' NH Rotary Sickle Mower; Military wagon running gear; Military Trailer frame; MF Sickle Mower; Danuser Post Hole Auger; Eazy Flow Gravity Flow Wagon; Parker Gravity Flow; 5th Wheel Running Gear; Hay Rack; JD 1075 Wagon Gear; 2 Barge Wagons; 2 Wagon Running Gears; Kewanee 600 Elevator & 4 Grain Augers; Doolittle 10'x66" Trailer, good cond; Brave 24 T 8hp Techemseh Log Splitter, Ball hitch; 5' 3pt Brush Hog, cat 1; JD 45 3pt 6' Blade; 3 pt pto Seeder 100 Gal JD 3 pt Sprayer w/ 27' Boom; Steel Posts; 04 Polaris 400 4 Wheeler; Older Harley Davidson Golf Cart; Hedge Posts; Gates; Cattle Working Chute; 2 JD Tractor Fuel Tanks; Set of 18.4-38 Duals; 4 JD 14" 5 bolt tires; New Osborne Hog Feeders & SS Hog Feeders; JD Hubs; Hardinge 3 Hp 3 phase (has new converter) Lathe; Coleman 6000 250 W/120V/240V Generator; 80 CC Alterain Farm Mini Bike; Scaffolding; Boat /Trailer; JD Lawn Mowers; JD 1518 Batwing Mower; 4 Row 38" 444 JD Corn Head; JD 566 Net Wrap Baler; JD 1075 Wagon Gear; 04 Polaris Sportsman 4 Wheeler; Older Harley Davidson Golf Cart; Cattle Working Chute; Fiat Agri Skidloader (as is); 99 Dodge Durango, no rust; 09 20' Skid Steer Trailer; 514 Hess-ton Baler (used very little, stored inside); JD Planter (used last yr 8 acres food plots); Inboard/Out-board Boat/Trailer; Good Wooden & T Posts; JD 34 Spreader; Kewanee 600 Elevator; 83 Hillsboro 7'x20' Gooseneck Livestock Trailer; Kewanee 1000 Series Disc; JD Lawn Mowers; Original Fire Truck Light Bar; JD T 14 Square Baler; New Idea Tandem Axle Spreader; 2 NIB Kenmore 25,000 & 10,000 BTU AC Units; 70 Small Bales Straw; Seed Cleaner on Wheels/Screens; Craftsman Power Washer 2400 psi; Brut Power Washer 2500 psi; ATV Seeder; Many Shop & Welding Tools, Lumber other farm related items.

Ad written early. Equipment coming in daily. LIST NOW. 641-895-4310



DEMRY AUCTION, LLC
JANET DEMRY • TOM DEMRY
641-895-4310 • 641-856-6408 • 641-895-2508
JUNIOR LAWSON 641-895-0037