

PETS

CHOCOLATE LAB pup, 9weeks, \$200 OBO, 641-745-0582, Lorimor.

AUSTRALIAN CROSS/HEALER puppies, born October 1st, easy to train, good with people and livestock, \$75each, 641-898-7399.

PUREBRED MINI POODLE puppies, male/female, 8weeks, apricot/black, call 515-669-0665.

MALTIEPOO PUP, 8wks, female, white/cream, \$400 cash, shots, de-wormed, raised indoors, 641-828-6176.

TWO MOUNTAIN CUR puppies ready for Christmas, 641-870-0079. Located near Lineville, IA.

FOR SALE, Blue and Red Heeler pups, \$300. Call or text 641-414-6602 or 641-414-2244, Osceola, IA.

AUSTRALIAN SHEPHERD PUPPIES Blue Merle, 1 female, 2 males, shots, ready Dec. 21, 515-250-8275.

DOG KENNEL PRIEFERT, powder coated 6 foot by 10 foot, two door panels, (3) side panels, \$900 new, now \$400 OBO. Tingley, contact James, 641-464-5649.

MINI AUSSIES, (2) males, 9wks old, \$250 & \$300, shots given, 641-414-2996.

HEELER CROSS PUPPIES, six weeks old, \$100 OBO, 641-898-2963

FOR SALE (8) Anadoodle black puppies. (4) males, (4) females, born December 9th, dew-claws removed, shots and wormed. Ready Valentine's day, can see here at the farm anytime. For more details www.rockindiamond.com. Everette and Betty Lee. Bedford, IA. 712-523-2282.

AKC LABRADOR puppies, black, yellow, charcoal, all shots and wormed, well socialized and smart, 8 weeks old, health guarantee, \$400, 515-975-2971.

FOR SALE: Border Collie puppies, purebred, mother and father good working dogs, 641-414-4948 or 641-414-4523.

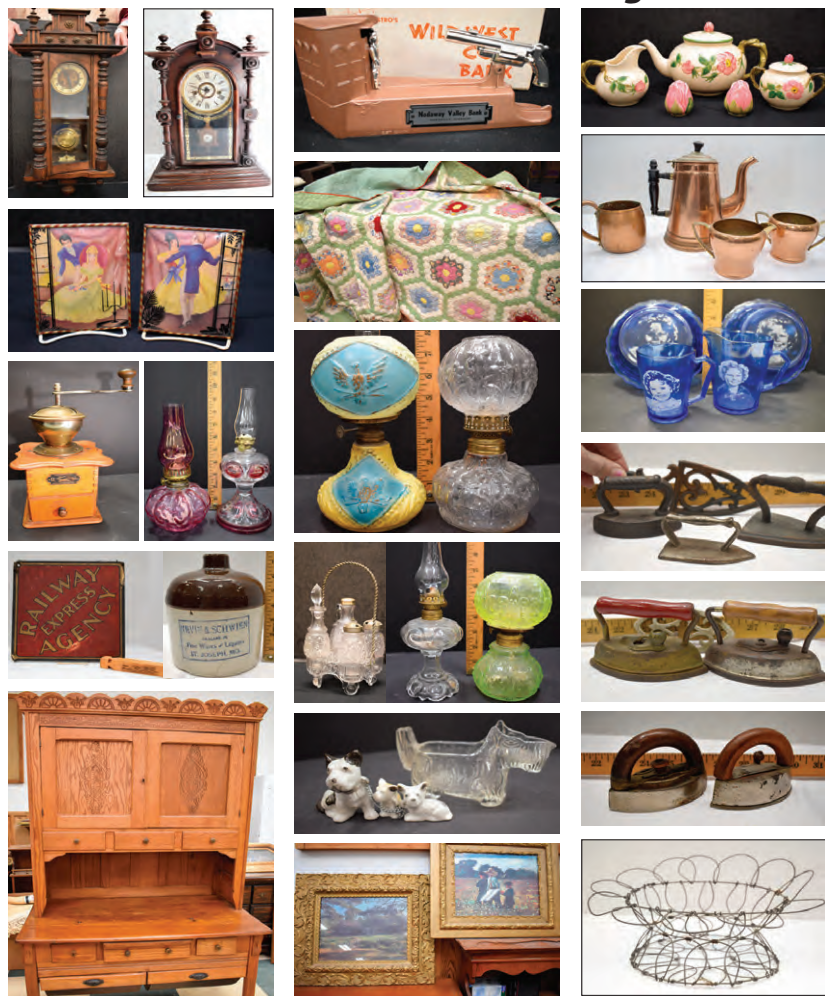
REGISTERED SHIBA INU puppies, shots/wormed 505-410-2115 NW Missouri area.

ESTATE AUCTION

Featuring Miniature Oil Lamps and Sad Irons, Carnival Glass, Primitives, Mantel & Wall Clock, Costume Jewelry, Quilts, Grandfather Clock, Vintage Furniture, General Household Items, Modern Furniture and Lawn & Garden

Saturday, January 16, 2021 - 10 am

Younger Auction Gallery, 312 E. South Hills Dr., Maryville, MO
Live Auction and Live Online Bidding Available



Estate of Phyllis Scott

Absolute, Nodaway County LAND AUCTION

220 Acres +/- ★ Offered in 2 Tracts
January 21, 2021 • 10 am

Younger Auction Gallery, 312, E. South Hills Drive, Maryville, MO 64468



Property Location: From Burlington Junction, MO, East on US Hwy. 136 to Eagle Road, South on Gravel 3.5 miles to 230th, then East approximately .5 miles to end of road. From Maryville – West on Hwy. 46, 5 miles to Black Top AB, North to 240th Street, then approximately 2.4 miles West on Gravel to Eagle Road, then north approximately 1 mile to 230th, East on Gravel – **Watch for Auction Signs.**

TRACT 1 – Features 65 Acres +/- of Good Gently Rolling Farmland with Some Sand Creek Bottom Ground, Balance in Pasture Land and Open Timber. Farm has had good stewardship of farming practice thru the years. There were approximately 45.2 Acres in Crop Production this year with Combination Corn & Soybeans. New owner will get immediate possession on Row Crop for Spring tillage if so desired. **Soil Types Include:** Nodaway Silt Loam, Sharpsburg Silty Clay Loam and Shelby Loam. **Taxes:** \$239.12



TRACT 2 – Located Just South of Tract 1, this tract features 154.78 Acres +/- with approximately 107.11 Acres Tillable according to FSA records. At Present there are 63.58 Acres in Row Crop of Corn and Soybean Production with approximately 43.53 acres in Gently Rolling Pasture, and balance in Open Timber. There is one Pond on property for livestock watering. Fencing is fair to good. This farm also carries good sand creek bottom ground. This would make a good location for home site in the West Nodaway School District. **Soil Types Include:** Nodaway Silt Loam, Lamoni Clay Loam, Sharpsburg Clay Loam, Shelby Loam, Colo Silty Clay Loam and Shelby Clay Loam. **Taxes:** \$531.00

Auctioneer's Note: If looking to expand your farming operation, make plans now for these don't come up for sale very often. These farms have the ability to capture more row crop acres if so desired, with good access to local grain elevators. Property will sell separately and will not be sold together. Make financial arrangements now, for property may sell in your price range. See you at the auction. - **Mark.**

Go to Website for Soil Maps and More Pictures
Pauline G. Hoyt Trust

Terms: 10% down payment of good faith, non-refundable money to be made on day of sale entering into purchase agreement guaranteeing clear title. Balance is due at closing on or before 30 days when full possession will be given. Escrow to be held at the office of Nodaway Abstract, Maryville, MO. Property is being sold "as is, where is". Statements made at time of auction take precedence over any advertising in print or online, printed documents, or previous statements. YAC, Inc. d.b.a. Younger Auction Company and its representatives are acting as exclusive agents of the sellers.

UPCOMING AUCTIONS
Watch for Details on our Website



JANUARY 2021

23RD – 350+ Lot Coin Auction – Featuring Gold, Morgan & Peace Dollars, Small Coinage & Currency – Online Bidding Available – Younger Auction Gallery at 10 am

FEBRUARY

6th – Norman E. Newcomb 250+ Pocket Knife, Vintage Fishing Equipment and Watch Fob Auction – Bulldog, Case, Buck, J.A Henkel's, Queen's Steel, Kershaw, Fighting Rooster; Vintage Boxes, Vintage Fishing Rods, Reels and Lures w/ Original Boxes, Assortment of Watch Fobs and More – Online Bidding Available – Younger Auction Gallery at 10 am

13th & 14th – 200+ Highline Military Gun and Target Rifle Auction – Featuring Approximately 100 M1 Garands, US Carbines, Springfield, Remingtons, Underwoods, Hand Guns Including: Smith & Wesson, Snake Guns, Rugers, Derringers, 1911's, ACP's; Bayonets, WWII Army Slings, 5.56 Army Ammunition & Other Ammo, Gun Racks and Gun Safe and so much more – Online Bidding Available, Viewing date Friday, February 12th from 4:30 pm – 7:00 pm – Younger Auction Gallery at 10 am and 11 am

20th – Toy Tractor & Collectible Auction – Featuring International Toy Tractors, John Deere Toy Tractors, Ertl's, New Holland Pedal Tractor, Rare IHC Collectible & Commemorative Case CEO Pins and Other Unusual Collectibles – Online Bidding Available – Younger Auction Gallery at 10 am

25th – Don & Carolyn McEnaney Retirement Farm Auction – Featuring Late Mdl, Low Hour Case Int'l 310 MFWD Tractor, 1255 Planter, 5030 C Disk Ripper, 36' Field Cultivator, 5140 Combine, 2162 Draper Head, 2014 Case TR270 Track Skidloader, 2018 Brandt Auger w/ Swing Around, Grain Trucks, Shop Tools and More – Online Bidding Available – Onsite in Tarkio, MO at 11 am

MARCH

6th – Bill Ballinger Retirement Farm Auction – Featuring John Deer, Int'l Equipment, Grain Trucks, Live Stock Equipment – Real Estate – Westboro, MO

13th – Arlin Dulin Machinery Auction – Featuring Late Model Int'l, John Deere, New Holland and Construction Equipment – Kansas City, MO

19th & 20th – Tools & Machinery Spring Consignment Auction – Younger Gallery

80 Acre +/- Nodaway County FARMLAND AUCTION

Older Home & Improvements
30107 State Hwy NN, Hopkins, MO 64461

Thursday, January 21, 2021 - 2:00 pm

Auction held at Younger Auction Gallery, 312 E. South Hills Dr., Maryville, MO

Property Location: North of Pickering, MO, on US Hwy 148 approximately 2 miles to Black Top NN, East approximately 1 mile, North side of road – Watch for Auction Signs.



This Property Features 80 Acres +/- with 70 Acres of Cropland according to FSA records. This gently rolling farmland has been in grass production for years for livestock production. Farm has approximately 4 Ponds with access to Rural Water if so desired, 1 Well for home.

Property also features older, smaller 1148 sq. ft., Two-Bedroom Home built in 1939 with Electric & Propane Furnace, Living Room, Kitchen, Single Bath with outside entry to Cellar/Storage Area and Utility Room. Other Improvements include Older Large Barn 40'x 32'; a 2-Car Garage 24'x 24' with Concrete Floor, and other Older Out Buildings for Storage. In North Nodaway School District. **Taxes:** \$559.85

Soil Types: Shelby Clay Loam, Sharpsburg Silty Clay Loam, Higginsville Silty Clay Loam and Macksburg Silty Clay Loam.



Auctioneer's Note: If looking for a small acreage with blacktop frontage close to Hopkins, Pickering and Maryville, Missouri, that is excellent for livestock or for the row crop farmer, this is it. Property drains extremely well with good ridge topsoils. Make plans now, for property may sell in your price range. Owner is very sincere in selling. See you Sale Day! ~ **Mark**

Visit Website for Maps and More Photos

TERMS: 10 % down payment of good faith, non-refundable money to be made on day of sale entering into purchase agreement guaranteeing clear title. Balance is due at closing on or before 30 days when full possession will be given. Escrow to be held at the office of Nodaway Abstract, Maryville, MO. Property is being sold "as is, where is". Statements made at time of auction take precedence over any advertising in print or online, printed documents, or previous statements. YAC, Inc d.b.a. Younger Auction Company and its representatives are acting as exclusive agents of the sellers.

ROSE ROBBINS TRUST

Evelyn Bollinger, Successor Trustee

2-Day Collectible Auction

Featuring 200+ Cookie Jars, 1000 + Collectible Vintage Salt & Peppers, Depression Glass, Pottery: Van Briggles, Roseville, Weller and Hull, Ceramic Banks and Figurines, Collector Books and More

January 30 - 10 am / January 31 - 11 am

Younger Auction Gallery, 312 E. South Hills Dr., Maryville, MO



Estate of Norman E. Newcomb



Mark Younger, Auctioneer For complete listings and more pictures visit our website

660-541-1977

Email: yac@youngerauction.com

WWW.YOUNGERAUCTION.COM